



Workforce Information Update

Rockford MSA

Boone & Winnebago Counties

Economic Information and Analysis
Illinois Department of Employment Security

For additional information
www.IDES.Illinois.gov



ILLINOIS DEPARTMENT OF EMPLOYMENT SECURITY
Economic Information & Analysis Division
Northwest Illinois

| | July 2024 | | | | July 2023 | | | | June 2024 |
|---|------------------|------------------|---------------------|-------------------|------------------|------------------|---------------------|-------------------|------------|
| | Labor Force | Employed | Unemployment Number | Unemployment Rate | Labor Force | Employed | Unemployment Number | Unemployment Rate | Rate |
| Rockford MSA | 64,186 | 59,213 | 4,973 | 7.7 | 63,770 | 58,960 | 4,810 | 7.5 | 7.6 |
| Boone County | 25,440 | 23,658 | 1,782 | 7.0 | 25,339 | 23,626 | 1,713 | 6.8 | 7.1 |
| Winnebago County | 135,551 | 126,527 | 9,024 | 6.7 | 134,517 | 125,988 | 8,529 | 6.3 | 6.6 |
| Counties | | | | | | | | | |
| Bureau County | 15,786 | 14,724 | 1,062 | 6.7 | 15,994 | 14,952 | 1,042 | 6.5 | 6.6 |
| Carroll County | 7,562 | 7,167 | 395 | 5.2 | 7,643 | 7,314 | 329 | 4.3 | 5.0 |
| DeKalb County | 56,066 | 52,802 | 3,264 | 5.8 | 55,530 | 52,786 | 2,744 | 4.9 | 5.6 |
| Henry County | 23,763 | 22,343 | 1,420 | 6.0 | 24,056 | 22,868 | 1,188 | 4.9 | 6.0 |
| Jo Daviess County | 11,163 | 10,579 | 584 | 5.2 | 11,062 | 10,643 | 419 | 3.8 | 4.8 |
| Kane County | 275,083 | 258,475 | 16,608 | 6.0 | 271,555 | 257,823 | 13,732 | 5.1 | 5.9 |
| Lee County | 17,386 | 16,448 | 938 | 5.4 | 17,181 | 16,394 | 787 | 4.6 | 5.3 |
| McHenry County | 173,674 | 164,124 | 9,550 | 5.5 | 170,908 | 164,494 | 6,414 | 3.8 | 5.5 |
| Ogle County | 24,408 | 23,005 | 1,403 | 5.7 | 24,078 | 22,797 | 1,281 | 5.3 | 5.7 |
| Stephenson County | 21,814 | 20,566 | 1,248 | 5.7 | 21,564 | 20,509 | 1,055 | 4.9 | 5.6 |
| Whiteside County | 28,356 | 26,714 | 1,642 | 5.8 | 28,237 | 26,818 | 1,419 | 5.0 | 5.7 |
| Cities | | | | | | | | | |
| Belvidere City | 11,309 | 10,391 | 918 | 8.1 | 11,294 | 10,377 | 917 | 8.1 | 8.3 |
| Freeport City | 10,738 | 9,995 | 743 | 6.9 | 10,599 | 9,967 | 632 | 6.0 | 6.9 |
| Rockford City | 64,186 | 59,213 | 4,973 | 7.7 | 63,770 | 58,960 | 4,810 | 7.5 | 7.6 |
| Illinois | 6,624,467 | 6,215,121 | 409,346 | 6.2 | 6,509,628 | 6,205,143 | 304,485 | 4.7 | 6.1 |
| United States (in thousands) | 169,723 | 162,038 | 7,685 | 4.5 | 168,354 | 161,982 | 6,372 | 3.8 | 4.3 |

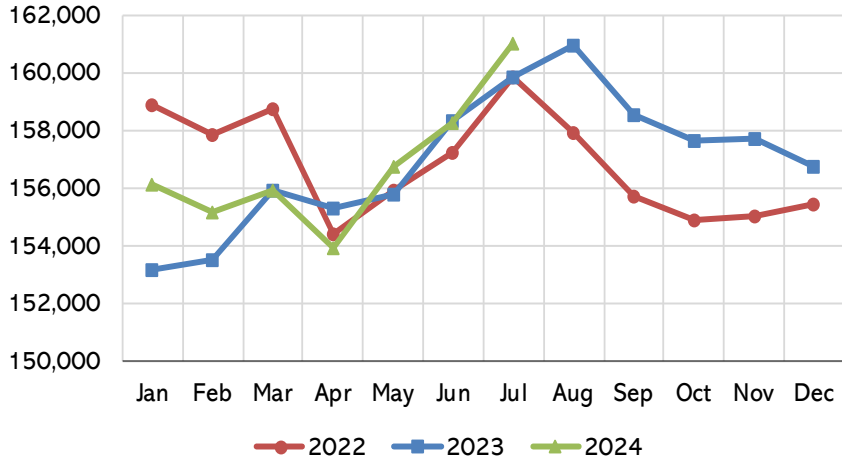
Data not seasonally adjusted
 Current month data are preliminary

Rockford MSA

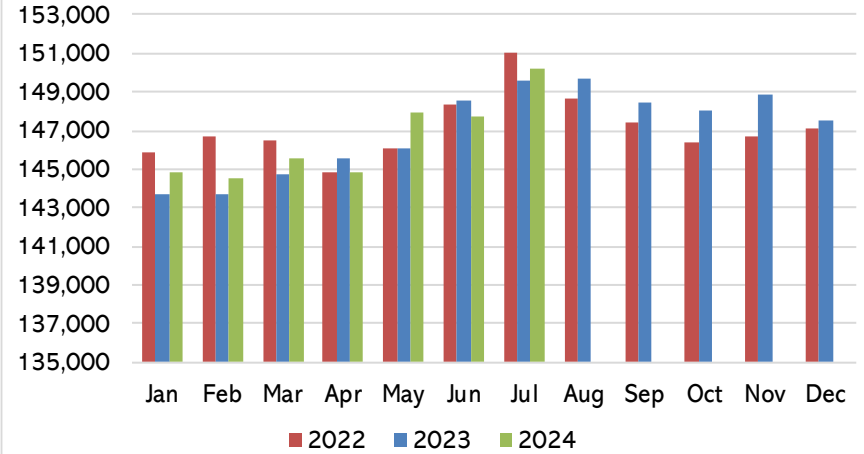
Labor Force Information- Not Seasonally Adjusted

July 2024

Total Labor Force

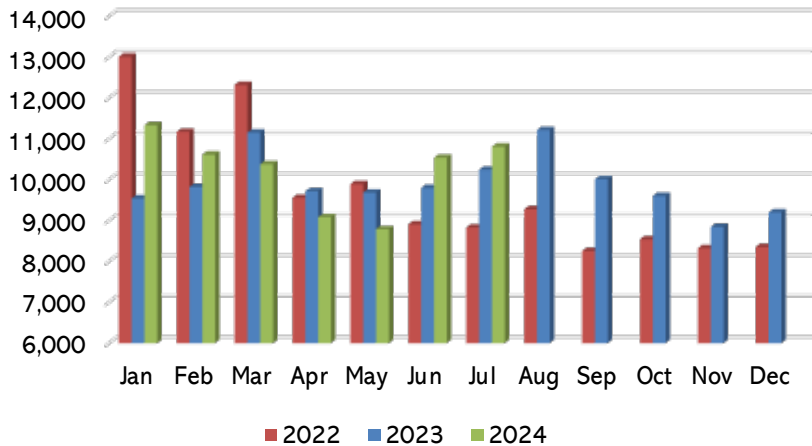


Number of Employed

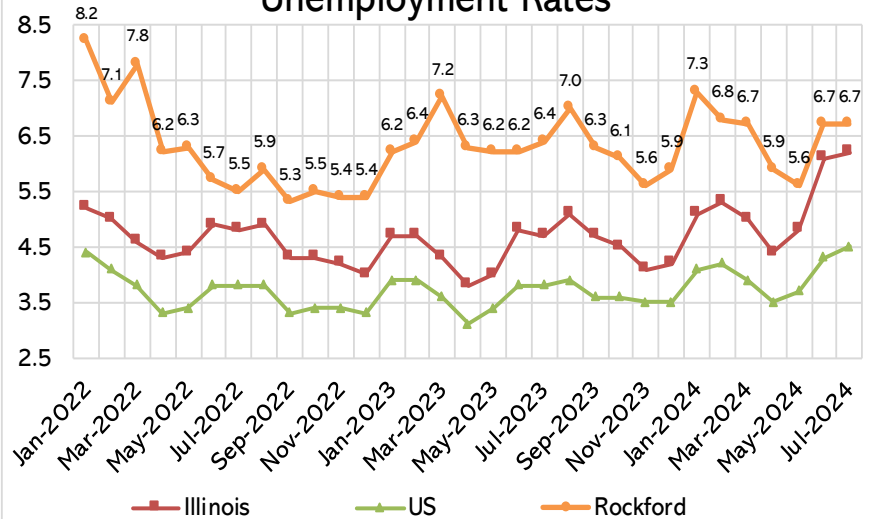


Note: Current month is preliminary

Number of Unemployed

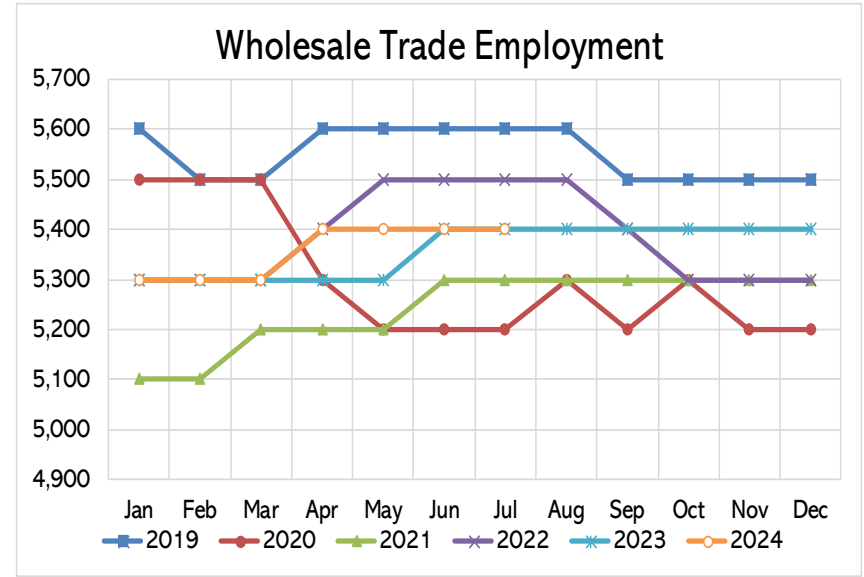
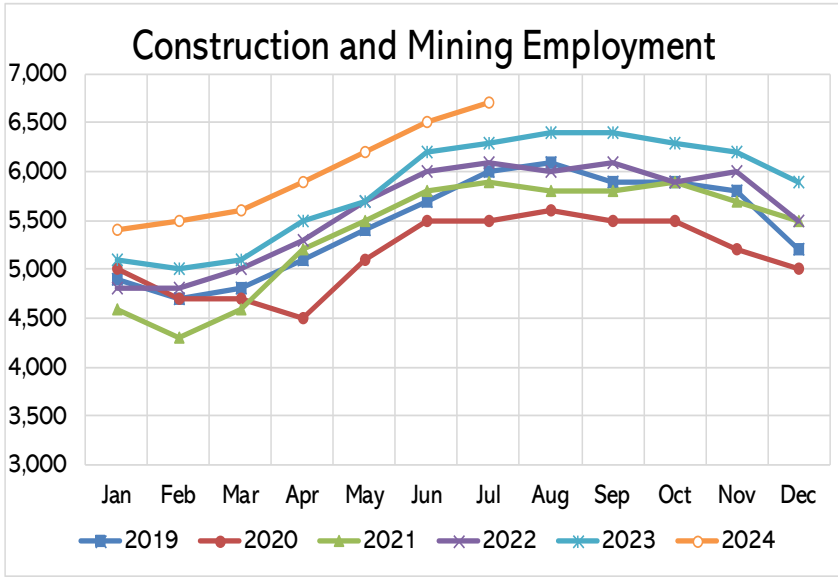


Unemployment Rates

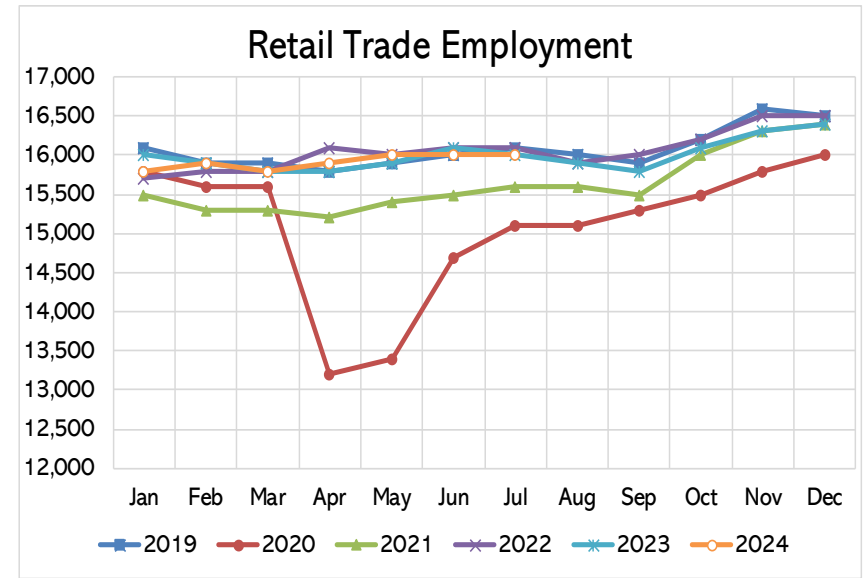
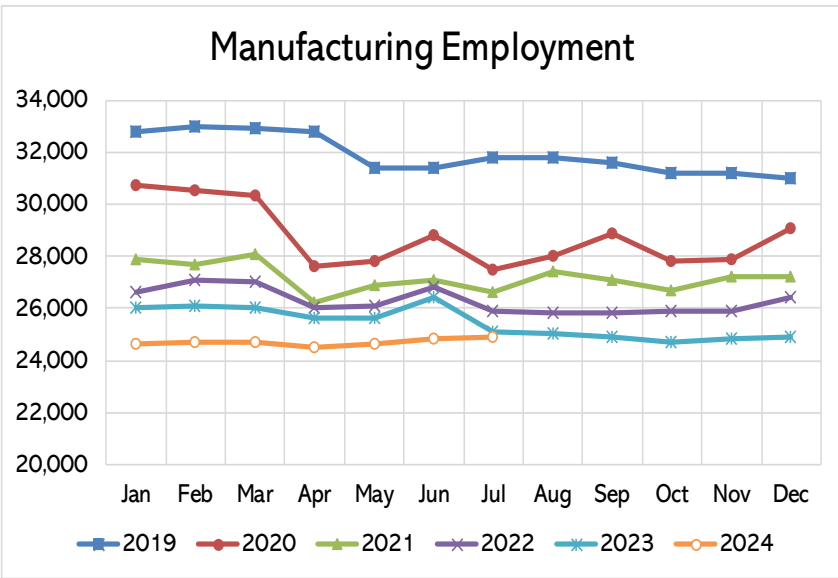


| | Jul-24 | Jun-24 | Jul-23 | Month Ago | | Year Ago | |
|---|----------------|----------------|----------------|-------------|--------------|------------|-------------|
| <i>Labor Force Information</i> | | | | # | % | # | % |
| <i>Civilian Labor Force</i> | 160,991 | 158,260 | 159,856 | 2,731 | 1.7% | 1,135 | 0.7% |
| <i>Employment</i> | 150,185 | 147,723 | 149,614 | 2,462 | 1.7% | 571 | 0.4% |
| <i>Unemployment</i> | 10,806 | 10,537 | 10,242 | 269 | 2.6% | 564 | 5.5% |
| <i>Unemployment Rate (%)</i> | 6.7 | 6.7 | 6.4 | 0.0 | | 0.3 | |
| <i>Employment by Industry Information</i> | | | | | | | |
| Total Nonfarm | 146,100 | 146,300 | 146,000 | -200 | -0.1% | 100 | 0.1% |
| Construction-Mining | 6,700 | 6,500 | 6,300 | 200 | 3.1% | 400 | 6.3% |
| Manufacturing | 24,900 | 24,800 | 25,100 | 100 | 0.4% | -200 | -0.8% |
| Wholesale Trade | 5,400 | 5,400 | 5,400 | 0 | 0.0% | 0 | 0.0% |
| Retail Trade | 16,000 | 16,000 | 16,000 | 0 | 0.0% | 0 | 0.0% |
| Transportation-Warehousing-Utilities | 9,000 | 9,100 | 9,000 | -100 | -1.1% | 0 | 0.0% |
| Information | 1,300 | 1,300 | 1,400 | 0 | 0.0% | -100 | -7.1% |
| Financial Activities | 4,400 | 4,400 | 4,500 | 0 | 0.0% | -100 | -2.2% |
| Professional-Business Services | 14,000 | 14,100 | 13,800 | -100 | -0.7% | 200 | 1.4% |
| Private Education-Health Services | 25,700 | 25,800 | 25,700 | -100 | -0.4% | 0 | 0.0% |
| Leisure-Hospitality | 15,800 | 15,800 | 15,400 | 0 | 0.0% | 400 | 2.6% |
| Other Services | 7,700 | 7,700 | 7,600 | 0 | 0.0% | 100 | 1.3% |
| Government | 15,200 | 15,400 | 15,800 | -200 | -1.3% | -600 | -3.8% |

Rockford MSA Employment by Industry July 2024

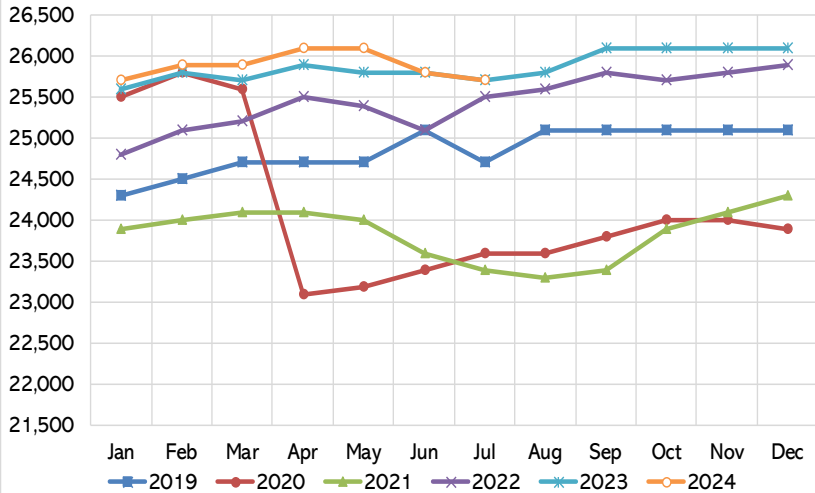


Note: Current month is preliminary

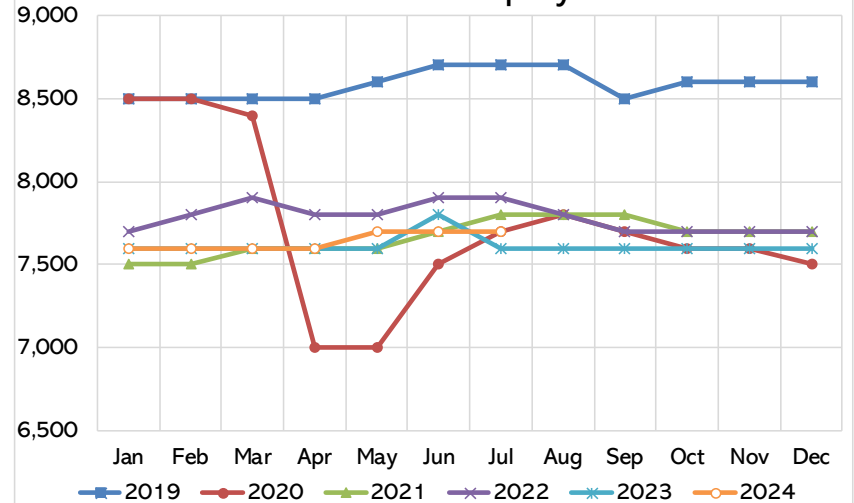


Rockford MSA Employment by Industry July 2024

Private Education and Health Services Employment

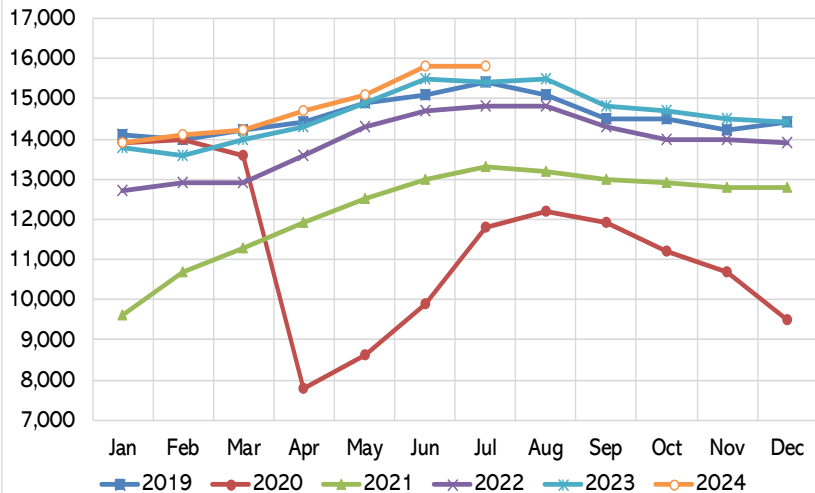


Other Services Employment

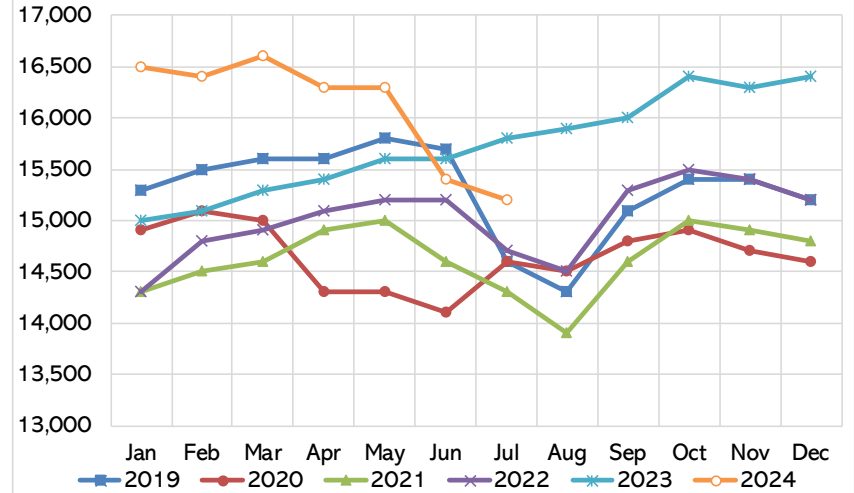


Note: Current month is preliminary

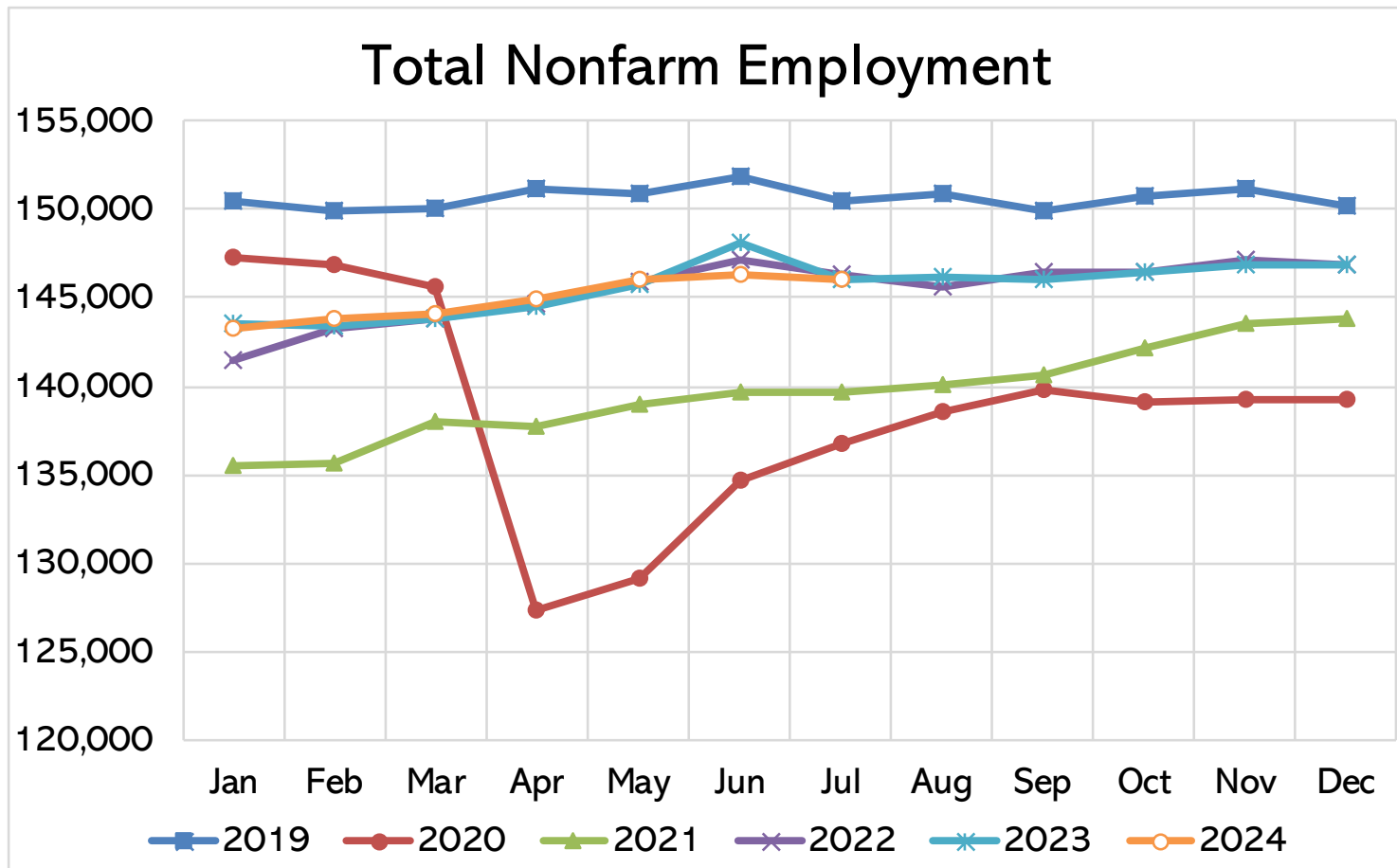
Leisure and Hospitality Employment



Government Employment



Rockford MSA
Employment by Industry
July 2024



Note: Current month is preliminary

Rockford MSA
Employment by Industry
July 2024

Employment by Industry Share

