



## Workforce Information Update

### **Rockford MSA**

Boone & Winnebago Counties

**Economic Information and Analysis**  
Illinois Department of Employment Security

For additional information  
[www.IDES.Illinois.gov](http://www.IDES.Illinois.gov)



**ILLINOIS DEPARTMENT OF EMPLOYMENT SECURITY**  
**Economic Information & Analysis Division**

**Northwest Illinois**

	<b>September 2024</b>				<b>September 2023</b>				<b>August 2024</b>
	<b>Labor Force</b>	<b>Employed</b>	<b>Unemployment Number</b>	<b>Unemployment Rate</b>	<b>Labor Force</b>	<b>Employed</b>	<b>Unemployment Number</b>	<b>Unemployment Rate</b>	<b>Rate</b>
<b>Rockford MSA</b>	<b>156,733</b>	<b>148,212</b>	<b>8,521</b>	<b>5.4</b>	<b>158,506</b>	<b>148,495</b>	<b>10,011</b>	<b>6.3</b>	<b>6.0</b>
Boone County	24,692	23,372	1,320	5.3	25,070	23,454	1,616	6.4	6.2
Winnebago County	132,041	124,840	7,201	5.5	133,436	125,041	8,395	6.3	6.0
<b>Counties</b>									
Bureau County	15,639	14,843	796	5.1	15,983	15,047	936	5.9	5.7
Carroll County	7,253	6,936	317	4.4	7,420	7,109	311	4.2	4.4
DeKalb County	54,568	52,079	2,489	4.6	55,307	52,708	2,599	4.7	5.2
Henry County	23,465	22,096	1,369	5.8	24,096	22,782	1,314	5.5	5.3
Jo Daviess County	10,812	10,367	445	4.1	10,920	10,508	412	3.8	4.4
Kane County	267,461	254,705	12,756	4.8	270,509	257,345	13,164	4.9	5.3
Lee County	16,955	16,243	712	4.2	17,035	16,302	733	4.3	4.5
McHenry County	172,647	165,033	7,614	4.4	169,040	162,493	6,547	3.9	4.8
Ogle County	23,908	22,776	1,132	4.7	24,156	22,920	1,236	5.1	5.0
Stephenson County	21,229	20,220	1,009	4.8	21,356	20,275	1,081	5.1	5.0
Whiteside County	27,681	26,407	1,274	4.6	27,936	26,613	1,323	4.7	5.0
<b>Cities</b>									
Belvidere City	10,911	10,265	646	5.9	11,156	10,301	855	7.7	7.1
Freeport City	10,450	9,827	623	6.0	10,489	9,853	636	6.1	6.1
Rockford City	62,466	58,423	4,043	6.5	63,287	58,517	4,770	7.5	7.2
<b>Illinois</b>	<b>6,533,877</b>	<b>6,207,010</b>	<b>326,867</b>	<b>5.0</b>	<b>6,469,887</b>	<b>6,166,580</b>	<b>303,307</b>	<b>4.7</b>	<b>5.5</b>
<b>United States (in thousands)</b>	<b>168,569</b>	<b>162,046</b>	<b>6,524</b>	<b>3.9</b>	<b>167,718</b>	<b>161,669</b>	<b>6,049</b>	<b>3.6</b>	<b>4.4</b>

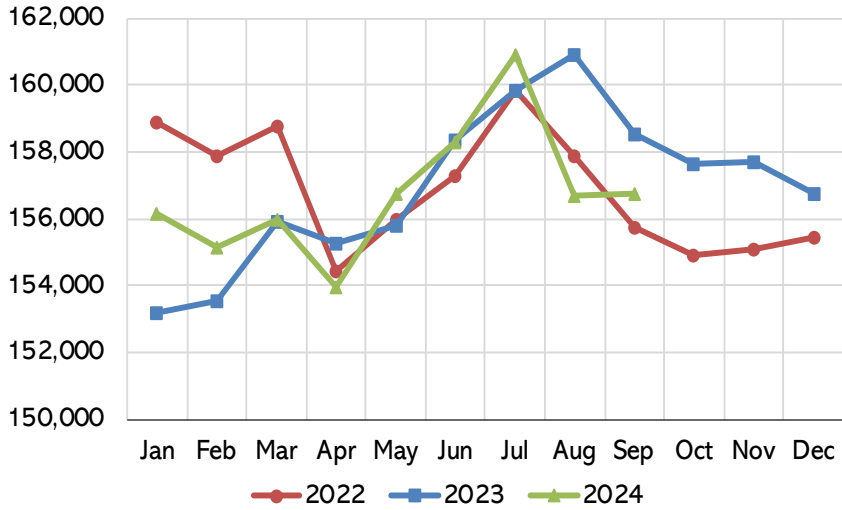
Data not seasonally adjusted  
 Current month data are preliminary

# Rockford MSA

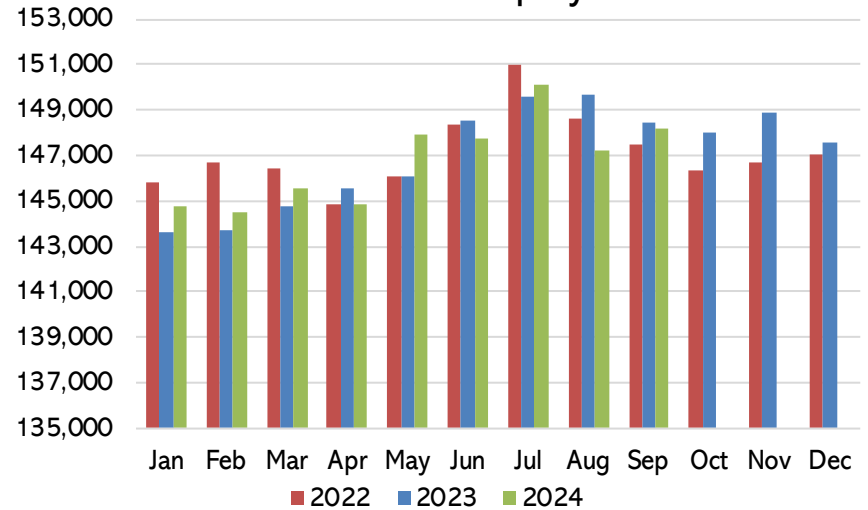
## Labor Force Information- Not Seasonally Adjusted

### September 2024

#### Total Labor Force

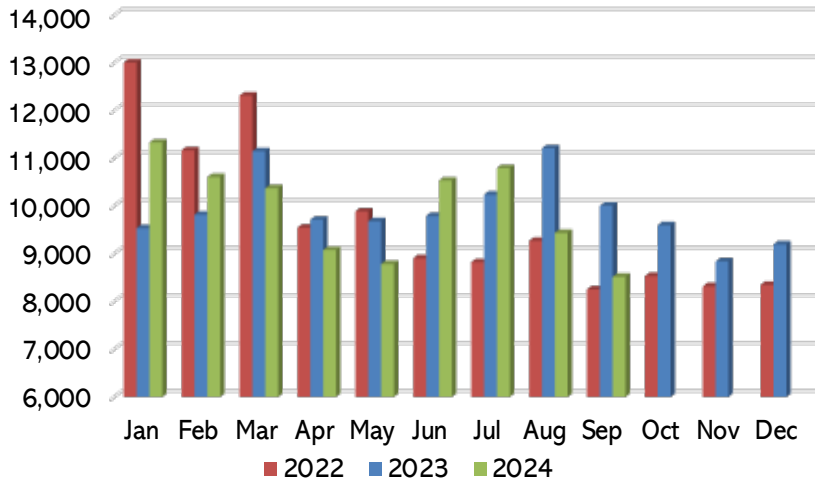


#### Number of Employed

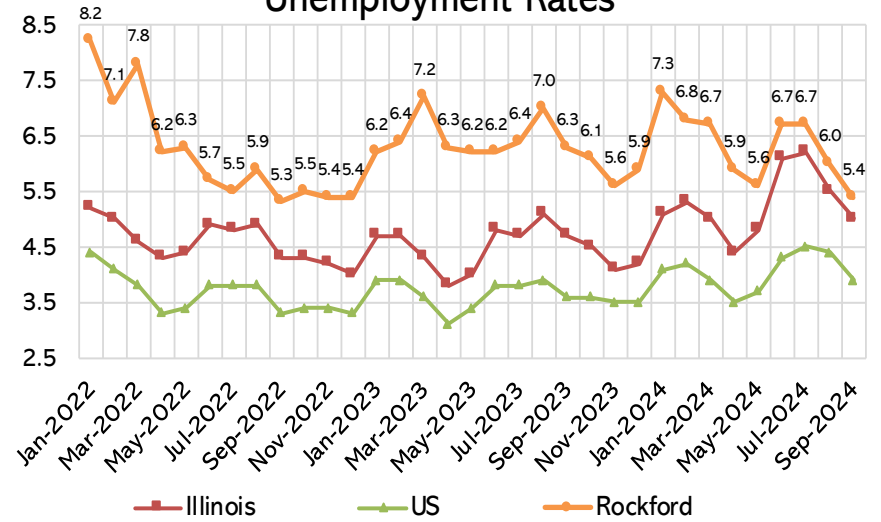


Note: Current month is preliminary

#### Number of Unemployed



#### Unemployment Rates



# Rockford MSA

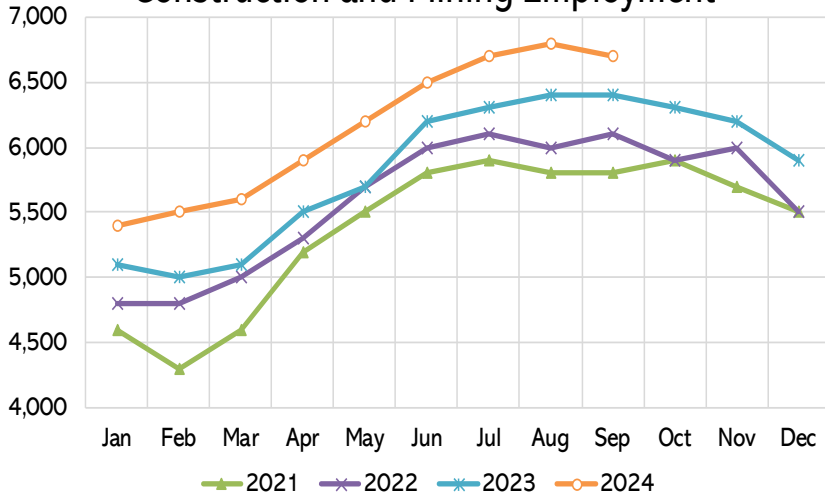
Boone and Winnebago Counties

Current Employment Statistics and  
Labor Force Information

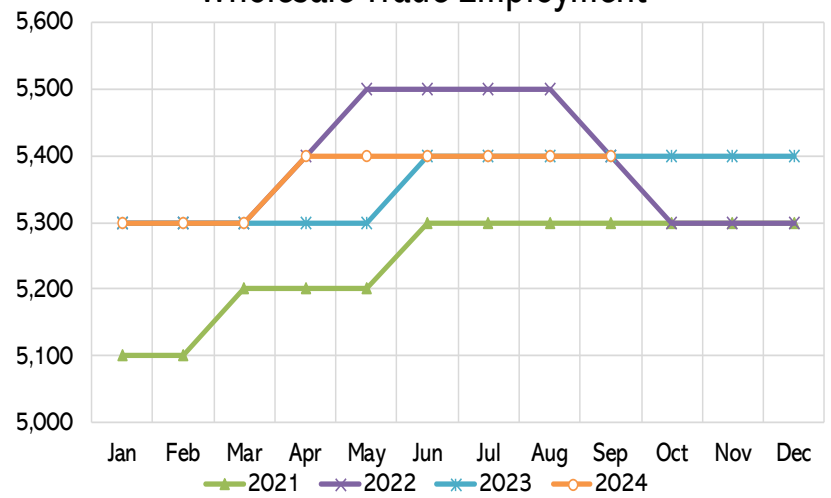
	Sep-24	Aug-24	Sep-23	Month Ago		Year Ago	
<i>Labor Force Information</i>				#	%	#	%
<i>Civilian Labor Force</i>	156,733	156,658	158,506	75	0.0%	-1,773	-1.1%
<i>Employment</i>	148,212	147,219	148,495	993	0.7%	-283	-0.2%
<i>Unemployment</i>	8,521	9,439	10,011	-918	-9.7%	-1,490	-14.9%
<i>Unemployment Rate (%)</i>	5.4	6.0	6.3	-0.6		-0.9	
<i>Employment by Industry Information</i>							
<b>Total Nonfarm</b>	<b>147,300</b>	<b>146,400</b>	<b>146,000</b>	<b>900</b>	<b>0.6%</b>	<b>1,300</b>	<b>0.9%</b>
Construction-Mining	6,700	6,800	6,400	-100	-1.5%	300	4.7%
Manufacturing	24,600	24,800	24,900	-200	-0.8%	-300	-1.2%
Wholesale Trade	5,400	5,400	5,400	0	0.0%	0	0.0%
Retail Trade	15,800	15,700	15,800	100	0.6%	0	0.0%
Transportation-Warehousing-Utilities	9,100	9,000	9,100	100	1.1%	0	0.0%
Information	1,300	1,300	1,400	0	0.0%	-100	-7.1%
Financial Activities	4,400	4,400	4,500	0	0.0%	-100	-2.2%
Professional-Business Services	14,000	14,000	14,000	0	0.0%	0	0.0%
Private Education-Health Services	26,100	25,800	26,100	300	1.2%	0	0.0%
Leisure-Hospitality	15,600	15,600	14,800	0	0.0%	800	5.4%
Other Services	7,700	7,700	7,600	0	0.0%	100	1.3%
Government	16,600	15,900	16,000	700	4.4%	600	3.8%

# Rockford MSA Employment by Industry September 2024

## Construction and Mining Employment

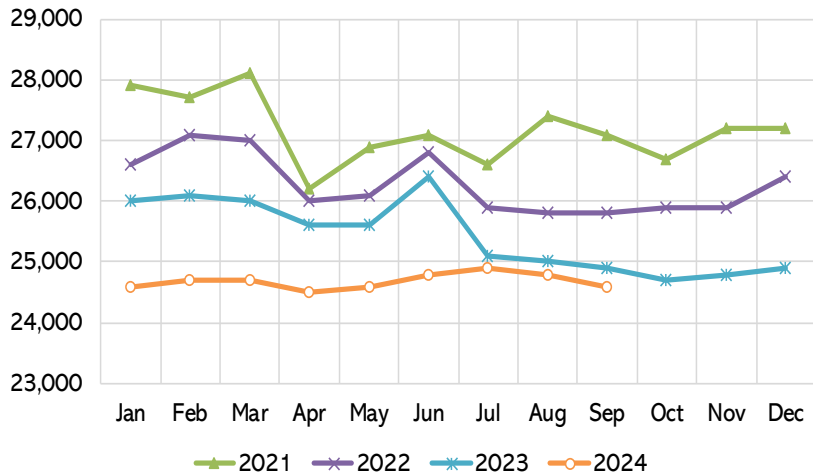


## Wholesale Trade Employment

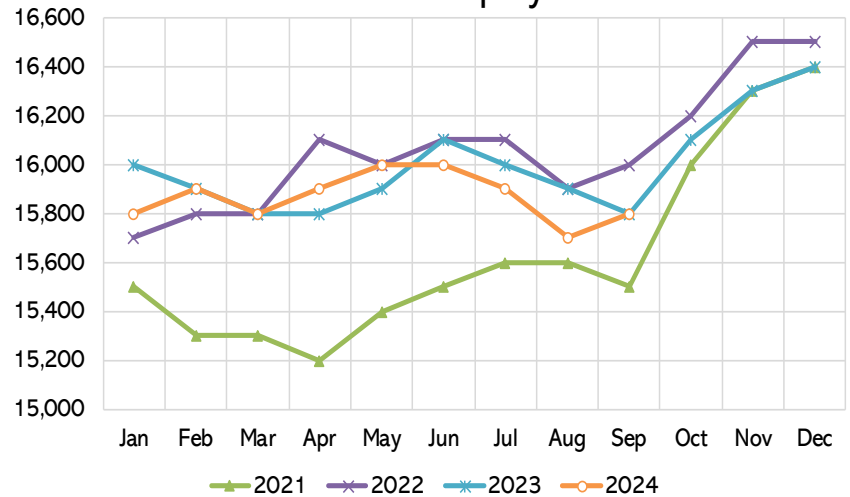


Note: Current month is preliminary

## Manufacturing Employment

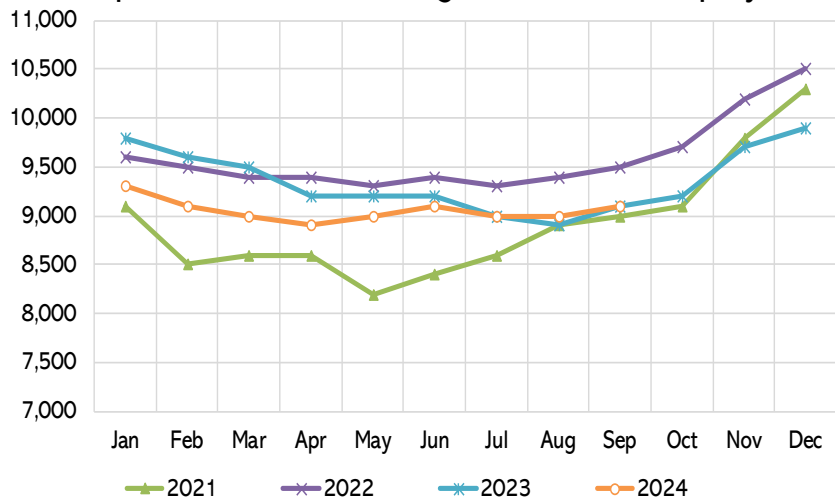


## Retail Trade Employment

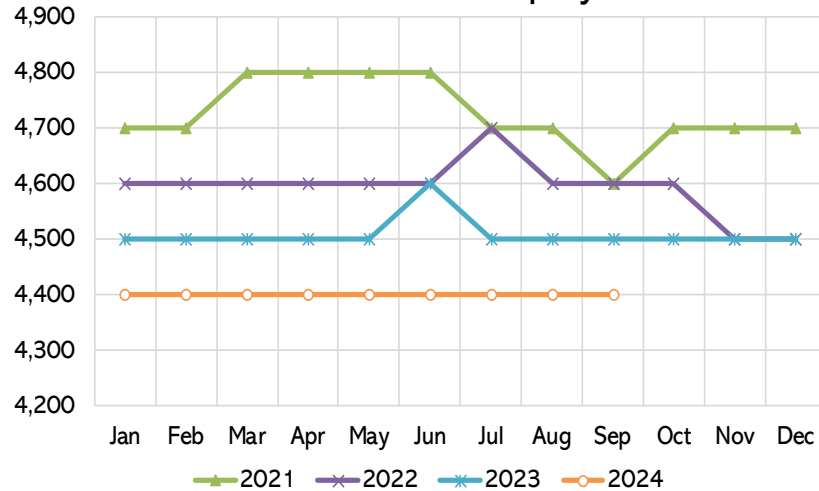


# Rockford MSA Employment by Industry September 2024

## Transportation, Warehousing, and Utilities Employment

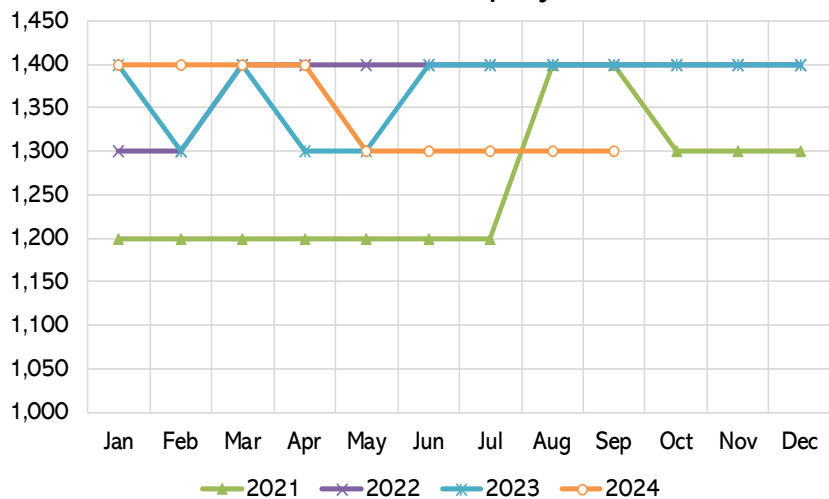


## Financial Activities Employment

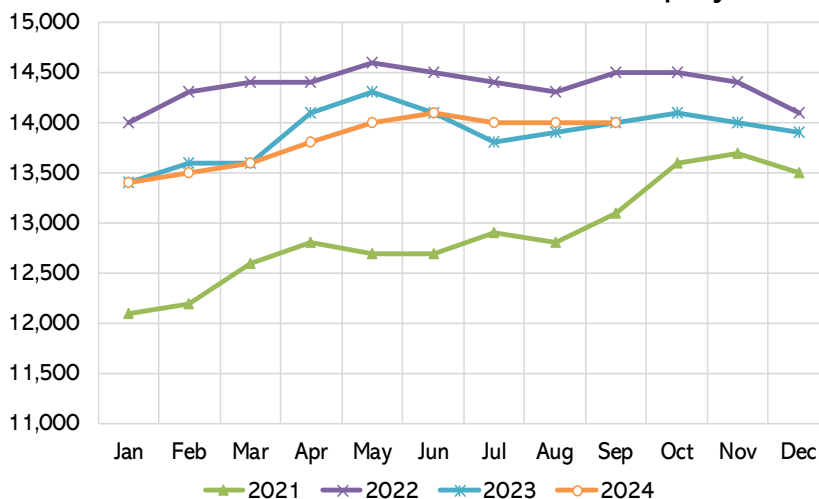


Note: Current month is preliminary

## Information Employment

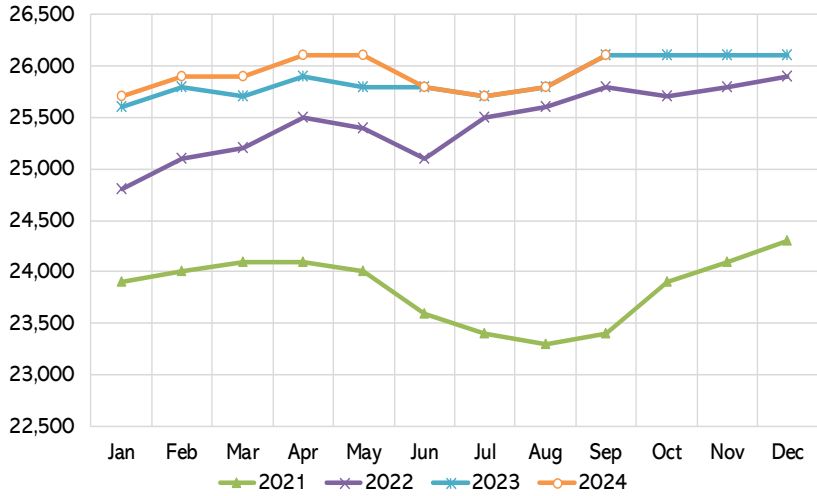


## Professional and Business Services Employment

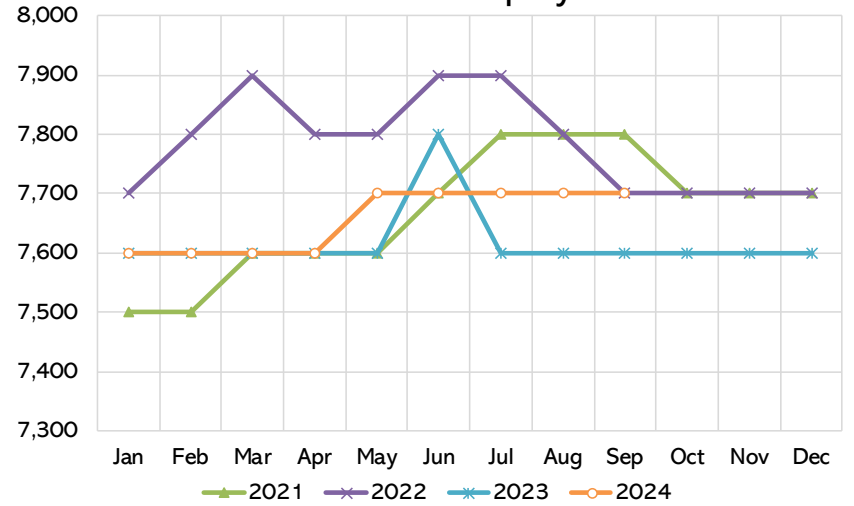


# Rockford MSA Employment by Industry September 2024

## Private Education and Health Services Employment

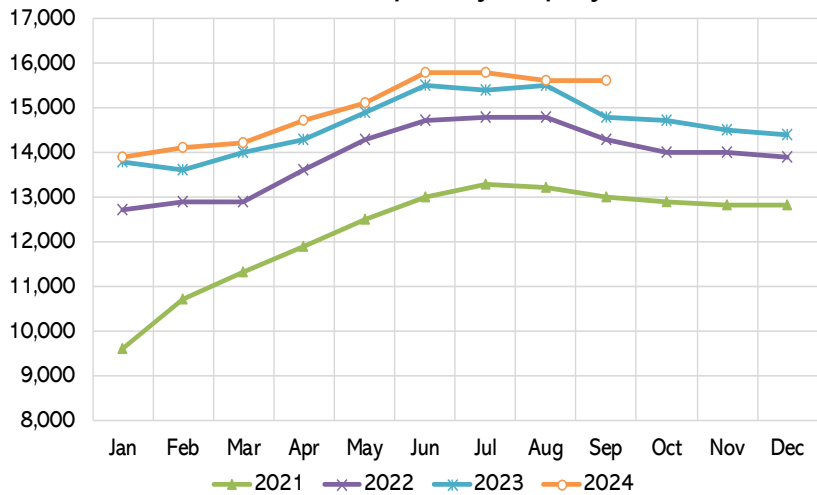


## Other Services Employment

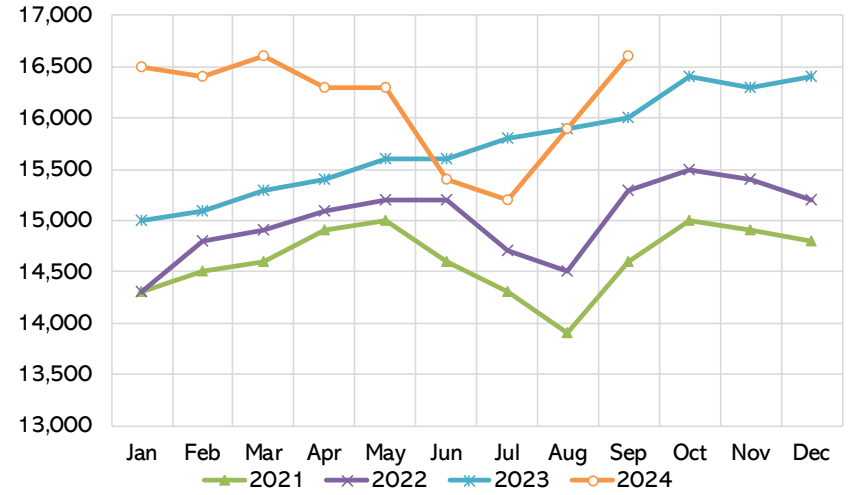


Note: Current month is preliminary

## Leisure and Hospitality Employment

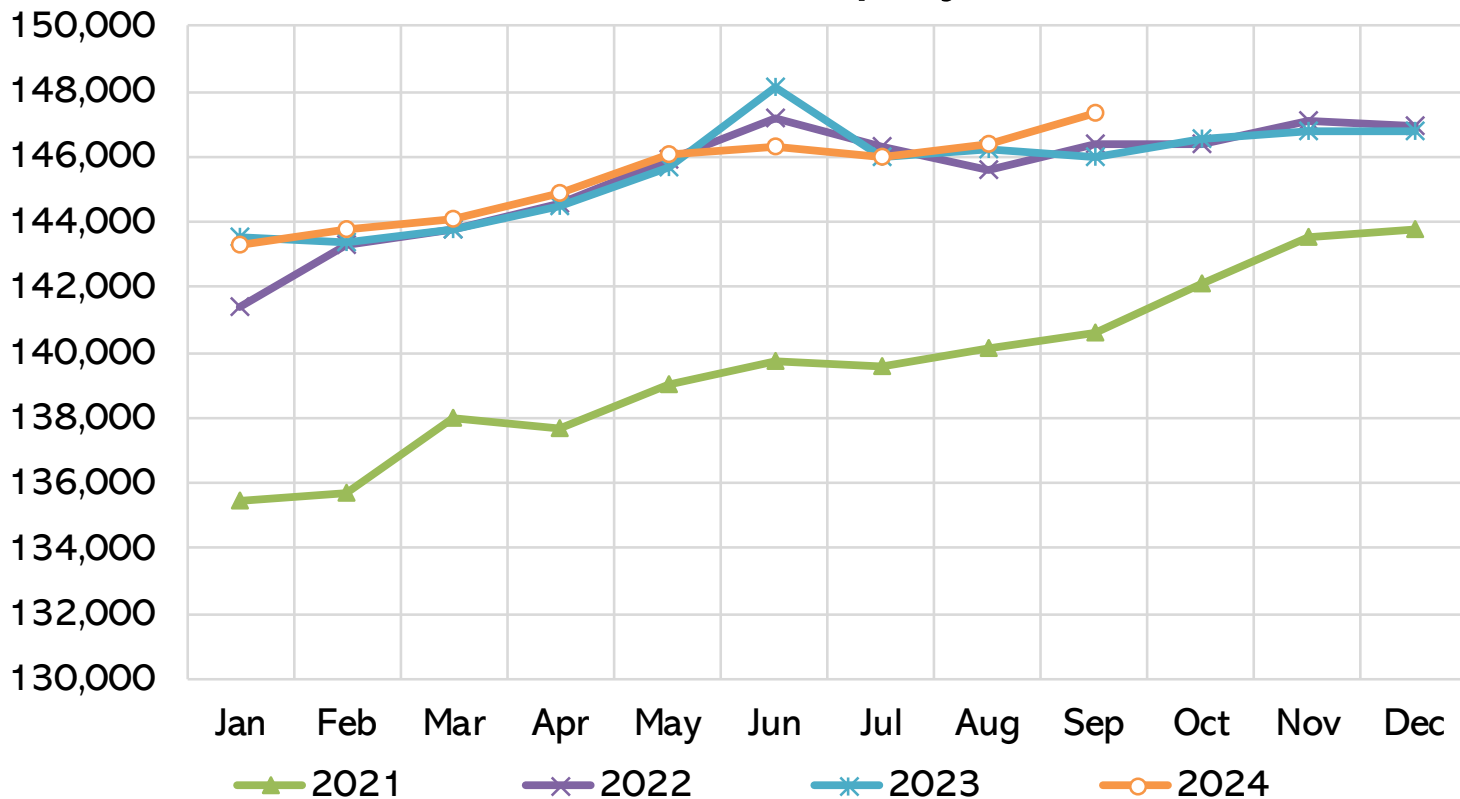


## Government Employment



Rockford MSA  
Employment by Industry  
September 2024

## Total Nonfarm Employment



Note: Current month is preliminary



Rockford MSA  
Employment by Industry  
September 2024

### Employment by Industry Share

