



Workforce Information Update

Rockford MSA

Boone & Winnebago Counties

Economic Information and Analysis
Illinois Department of Employment Security

For additional information
www.IDES.Illinois.gov



ILLINOIS DEPARTMENT OF EMPLOYMENT SECURITY
Economic Information & Analysis Division
Northwest Illinois

	October 2024				October 2023				September 2024
	Labor Force	Employed	Unemployment Number	Unemployment Rate	Labor Force	Employed	Unemployment Number	Unemployment Rate	Rate
Rockford MSA	156,305	147,942	8,363	5.4	157,630	148,030	9,600	6.1	5.4
Boone County	24,569	23,290	1,279	5.2	24,869	23,327	1,542	6.2	5.3
Winnebago County	131,736	124,652	7,084	5.4	132,761	124,703	8,058	6.1	5.5
Counties									
Bureau County	15,408	14,609	799	5.2	15,573	14,705	868	5.6	5.1
Carroll County	7,142	6,829	313	4.4	7,209	6,917	292	4.1	4.4
DeKalb County	54,339	51,888	2,451	4.5	54,935	52,416	2,519	4.6	4.6
Henry County	23,487	22,151	1,336	5.7	23,766	22,541	1,225	5.2	5.8
Jo Daviess County	10,612	10,200	412	3.9	10,668	10,287	381	3.6	4.1
Kane County	266,633	254,079	12,554	4.7	269,101	256,348	12,753	4.7	4.8
Lee County	16,849	16,159	690	4.1	16,905	16,199	706	4.2	4.2
McHenry County	174,458	166,283	8,175	4.7	169,813	163,693	6,120	3.6	4.4
Ogle County	23,845	22,723	1,122	4.7	24,071	22,911	1,160	4.8	4.7
Stephenson County	21,048	20,056	992	4.7	21,145	20,113	1,032	4.9	4.7
Whiteside County	27,448	26,159	1,289	4.7	27,609	26,334	1,275	4.6	4.6
Cities									
Belvidere City	10,862	10,229	633	5.8	11,090	10,246	844	7.6	5.9
Freeport City	10,355	9,747	608	5.9	10,391	9,775	616	5.9	6.0
Rockford City	62,321	58,335	3,986	6.4	62,915	58,359	4,556	7.2	6.5
Illinois	6,570,897	6,231,455	339,442	5.2	6,475,827	6,186,161	289,666	4.5	5.0
United States (in thousands)	168,569	161,938	6,631	3.9	167,774	161,676	6,098	3.6	3.9

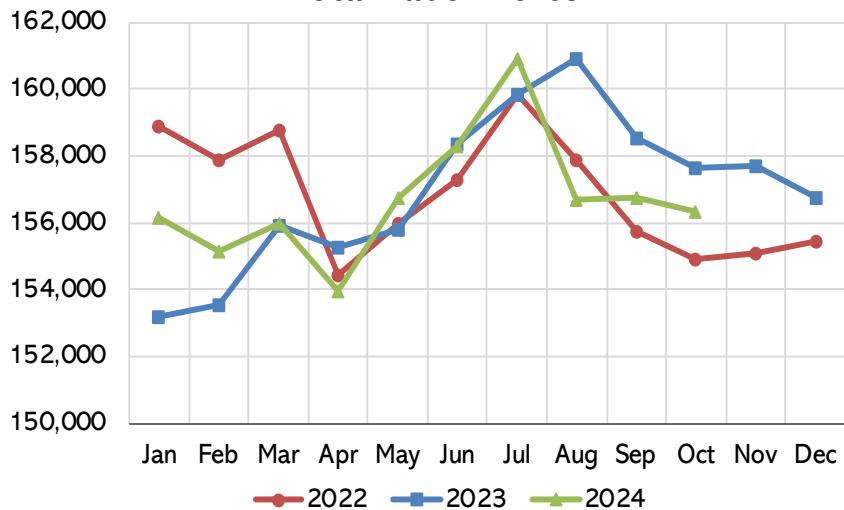
Data not seasonally adjusted
 Current month data are preliminary

Rockford MSA

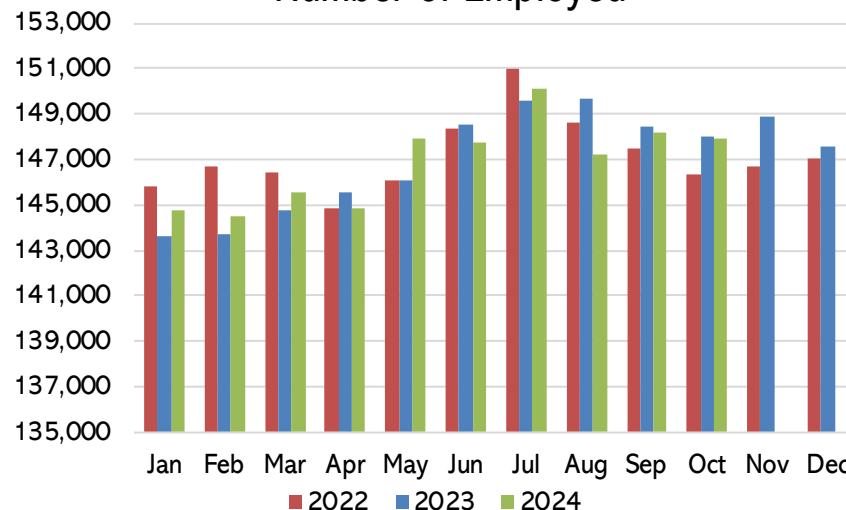
Labor Force Information- Not Seasonally Adjusted

October 2024

Total Labor Force

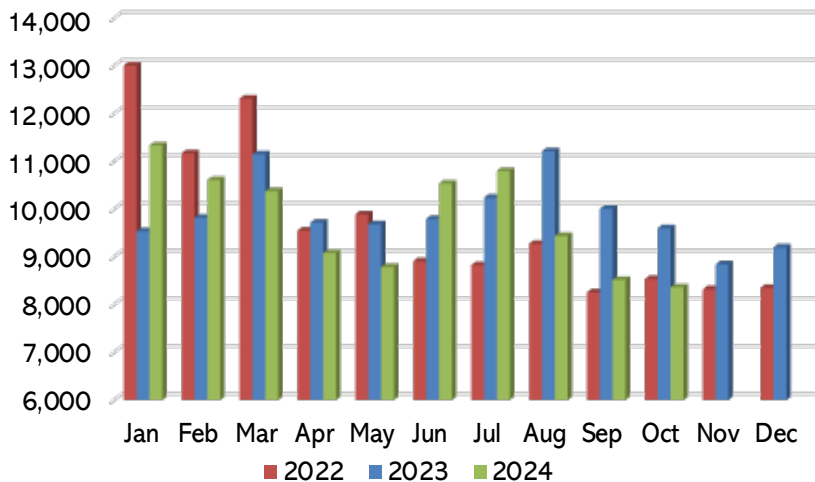


Number of Employed

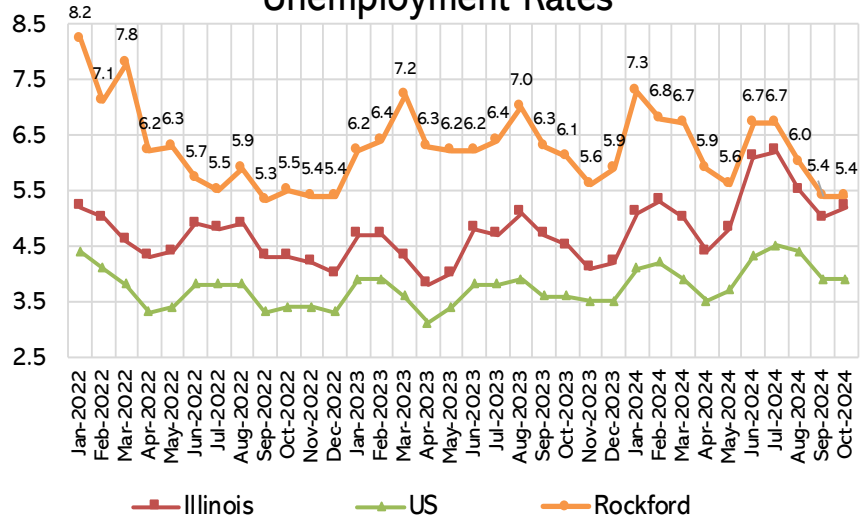


Note: Current month is preliminary

Number of Unemployed



Unemployment Rates



Rockford MSA

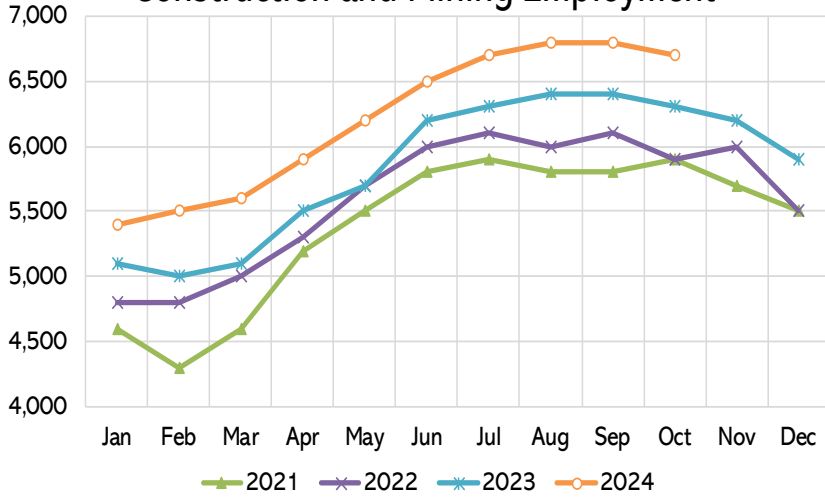
Boone and Winnebago Counties

Current Employment Statistics and
Labor Force Information

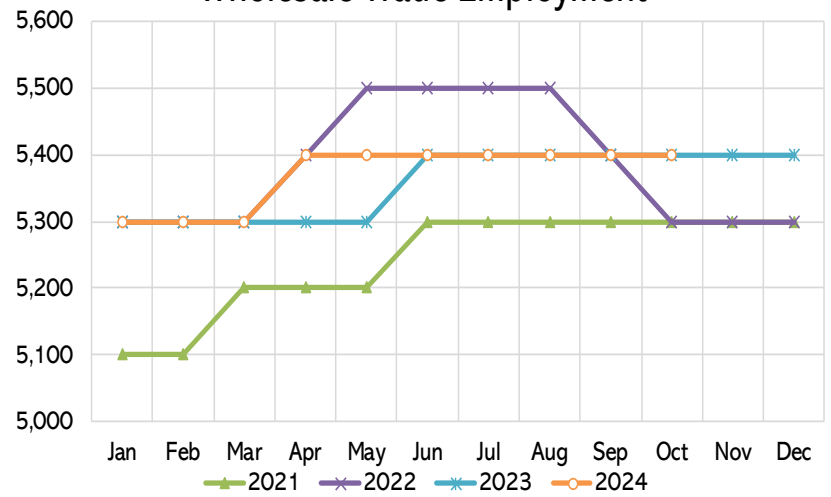
	Oct-24	Sep-24	Oct-23	Month Ago		Year Ago	
<i>Labor Force Information</i>				#	%	#	%
<i>Civilian Labor Force</i>	156,305	156,720	157,630	-415	-0.3%	-1,325	-0.8%
<i>Employment</i>	147,942	148,201	148,030	-259	-0.2%	-88	-0.1%
<i>Unemployment</i>	8,363	8,519	9,600	-156	-1.8%	-1,237	-12.9%
<i>Unemployment Rate (%)</i>	5.4	5.4	6.1	0.0		-0.7	
<i>Employment by Industry Information</i>							
Total Nonfarm	147,700	147,200	146,500	500	0.3%	1,200	0.8%
Construction-Mining	6,700	6,800	6,300	-100	-1.5%	400	6.3%
Manufacturing	24,600	24,600	24,700	0	0.0%	-100	-0.4%
Wholesale Trade	5,400	5,400	5,400	0	0.0%	0	0.0%
Retail Trade	15,900	15,700	16,100	200	1.3%	-200	-1.2%
Transportation-Warehousing-Utilities	9,100	9,100	9,200	0	0.0%	-100	-1.1%
Information	1,300	1,300	1,400	0	0.0%	-100	-7.1%
Financial Activities	4,400	4,400	4,500	0	0.0%	-100	-2.2%
Professional-Business Services	14,100	14,000	14,100	100	0.7%	0	0.0%
Private Education-Health Services	26,300	26,100	26,100	200	0.8%	200	0.8%
Leisure-Hospitality	15,600	15,600	14,700	0	0.0%	900	6.1%
Other Services	7,600	7,600	7,600	0	0.0%	0	0.0%
Government	16,700	16,600	16,400	100	0.6%	300	1.8%

Rockford MSA Employment by Industry October 2024

Construction and Mining Employment

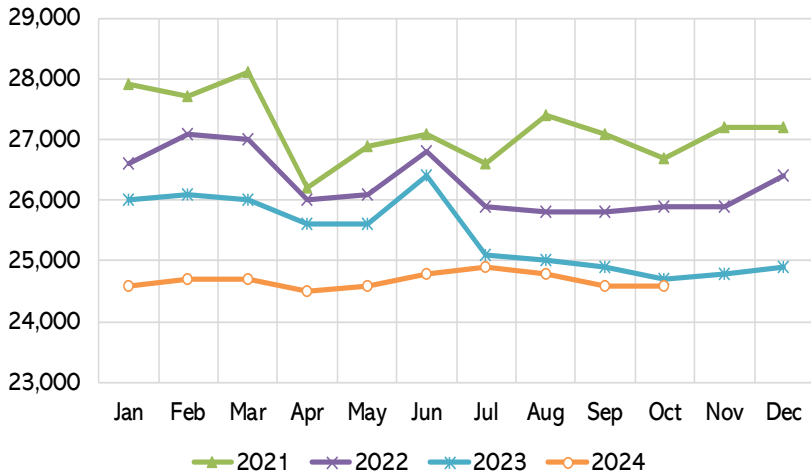


Wholesale Trade Employment

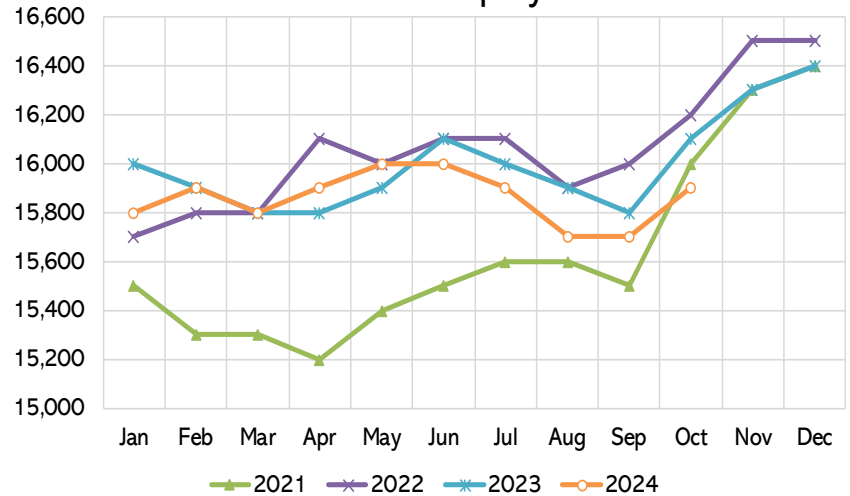


Note: Current month is preliminary

Manufacturing Employment

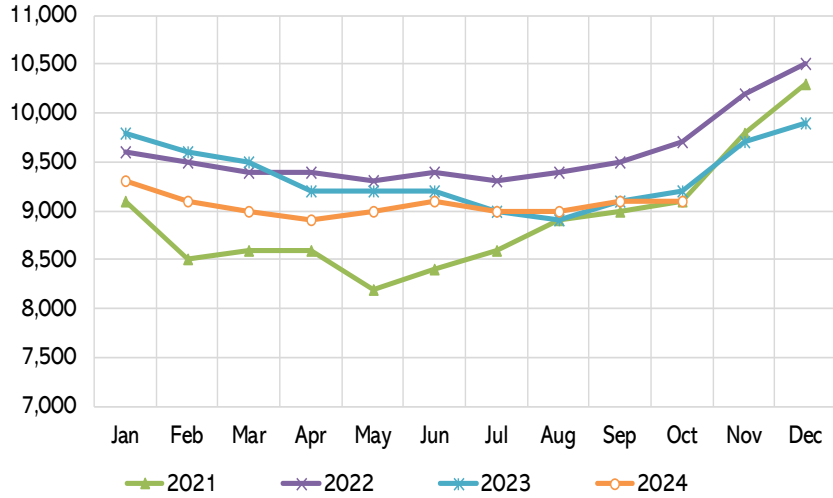


Retail Trade Employment

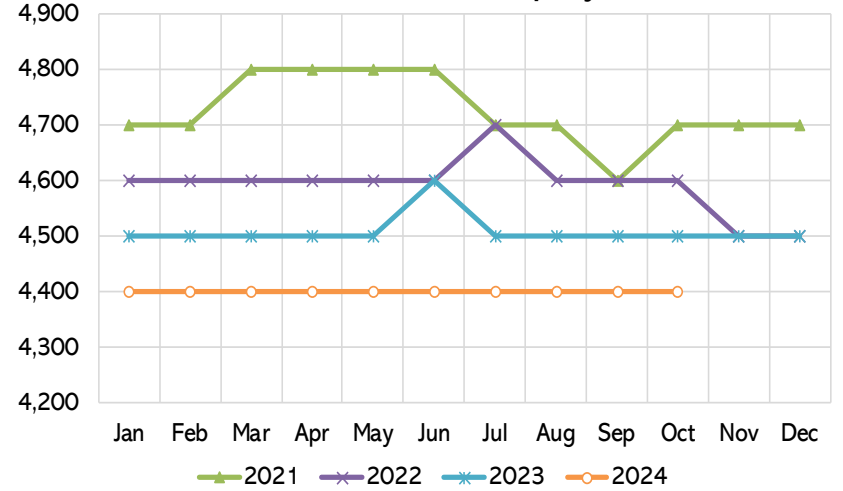


Rockford MSA Employment by Industry October 2024

Transportation, Warehousing, and Utilities Employment

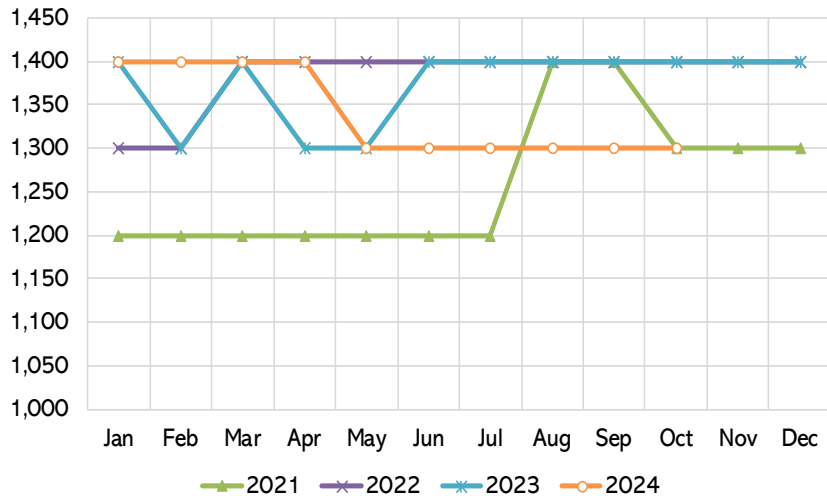


Financial Activities Employment

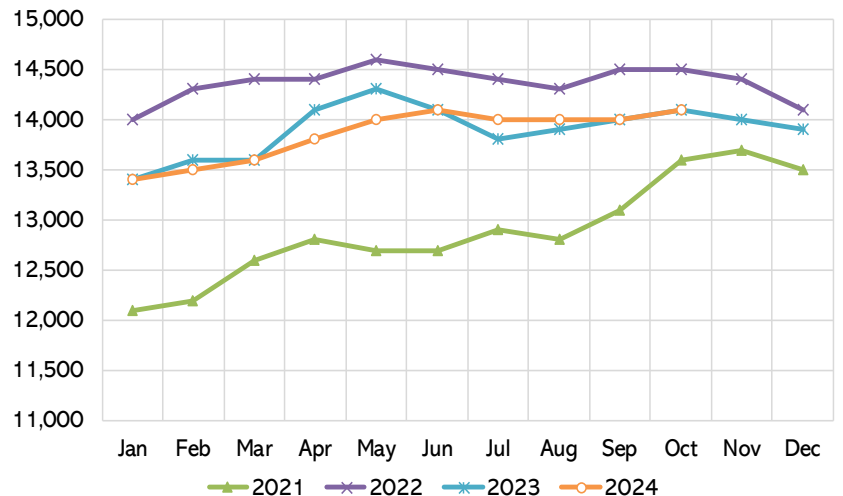


Note: Current month is preliminary

Information Employment

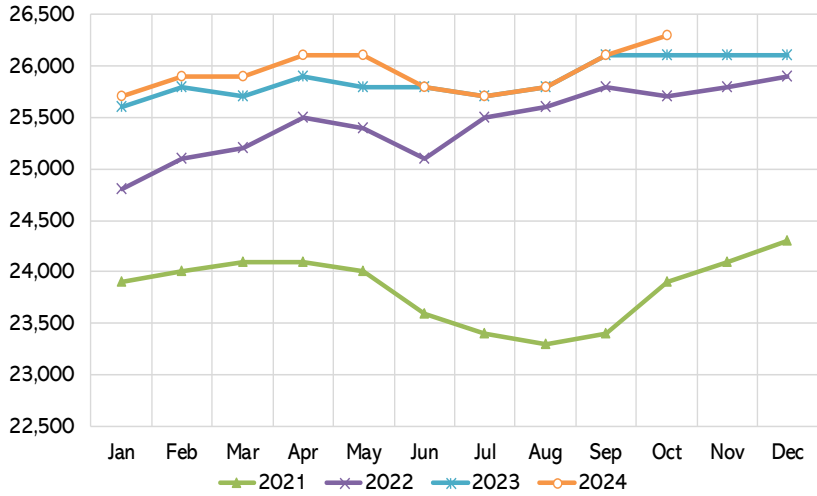


Professional and Business Services Employment

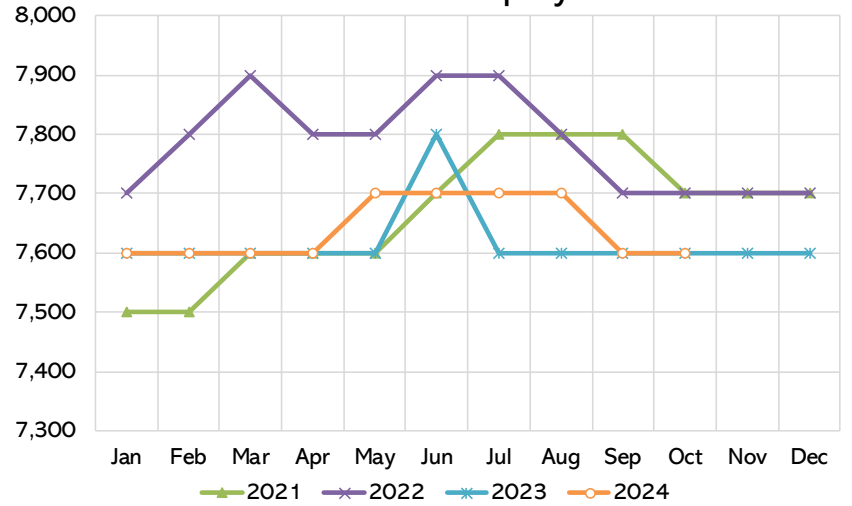


Rockford MSA Employment by Industry October 2024

Private Education and Health Services Employment

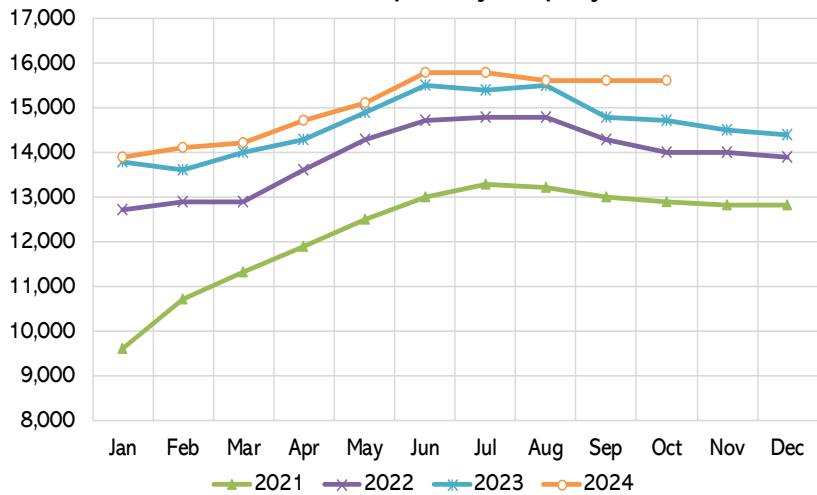


Other Services Employment

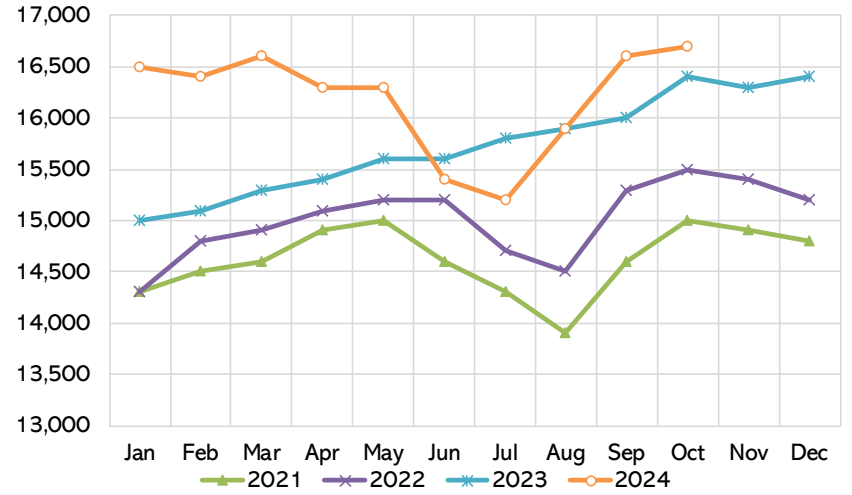


Note: Current month is preliminary

Leisure and Hospitality Employment

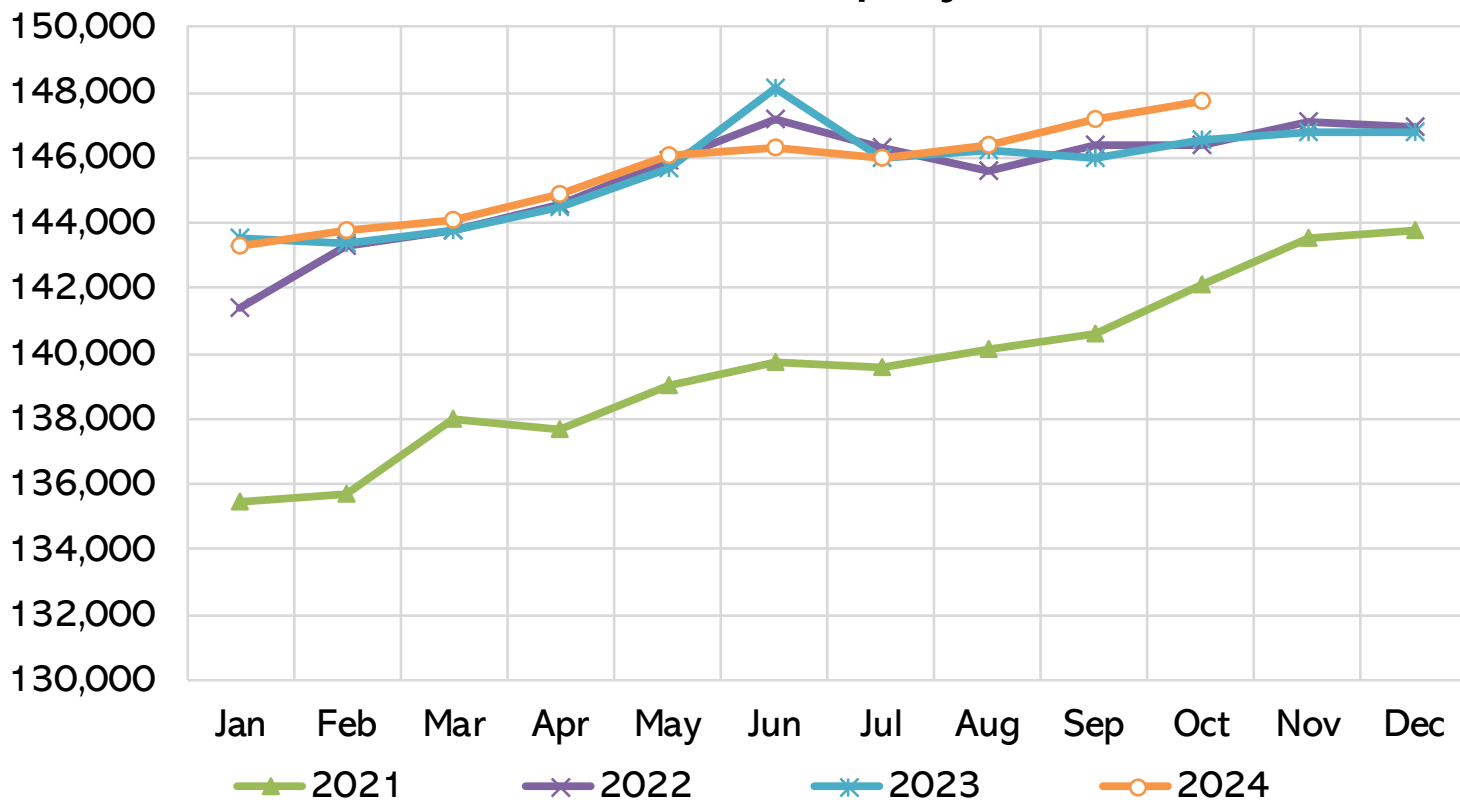


Government Employment



Rockford MSA
Employment by Industry
October 2024

Total Nonfarm Employment



Note: Current month is preliminary

Rockford MSA
Employment by Industry
October 2024

Employment by Industry Share

